

Determinants of splanchnic blood flow

J. TAKALA

The splanchnic region participates in the regulation of circulating blood volume and systemic blood pressure [60]. Major reduction of splanchnic blood volume and flow can be vital in defending the perfusion of the brain and the heart in acute hypovolaemia, but prolonged hypoperfusion of the splanchnic region will inevitably lead to hypoxic tissue injury [55]. The splanchnic region is also an important source and target of inflammatory mediators, which have a major impact on both systemic and regional blood flow and tissue functions [45]. The splanchnic circulation is in close interaction with the systemic haemodynamics under normal conditions. In the intensive care patient at risk of multiple organ failure, there is a complex and poorly understood interaction between the splanchnic blood flow, metabolic demands of the tissues and the mediators of inflammation and vasoregulation.

Inadequate splanchnic blood flow and tissue perfusion are likely to contribute to the development of organ failures and increased mortality in various categories of intensive care patients [8]. Monitoring of gastric intramucosal pH (pH_i) or intramucosal PCO_2 by gastrointestinal tonometry has provided an indicator of splanchnic tissue perfusion that is feasible for clinical use in intensive care [15, 18, 19, 27, 30, 32, 47, 48, 49]. Clinical studies using gastrointestinal tonometry have produced evidence to support the concept of a link between inadequate splanchnic tissue perfusion and multiple organ failure.

Gastric intramucosal acidosis, suggesting inadequate splanchnic tissue perfusion, is relatively common: up to 50% of patients admitted to intensive care with signs of circulatory failure, 50% of patients undergoing elective cardiac surgery and 18% of patients undergoing abdominal aortic surgery have at least transient episodes of gastric intramucosal acidosis [15, 18, 19, 30, 32, 47, 48, 49]. Patients with gastric intramucosal acidosis on admission to intensive care have an increased occurrence of multiple organ failure and increased mortality [30, 32, 47, 48]. Prevention and treatment of gastric intramucosal acidosis by administration of fluids and vasoactive drugs improves the outcome of

those patients with normal pH_i on admission [32, 49].

The mechanisms responsible for the increased morbidity and mortality related to the inadequate splanchnic perfusion are far from being solved. Evidently alterations in systemic haemodynamics can impair the splanchnic blood flow and tissue perfusion [33, 55]. Tissue hypoxia with consequent direct hypoxic tissue injury, although likely to contribute, is clearly a too simplistic explanation. Translocation of bacteria and toxic substances, as a result of hypoxic intestinal mucosal injury, may occur but is unlikely to be a major factor [14]. Inadequate mucosal perfusion increases the intestinal mucosal permeability [20]. All these mechanisms and ischaemia and reperfusion of splanchnic tissues may contribute to the activation of inflammatory mediator networks, and thereby further modify the circulatory and metabolic responses locally, within the splanchnic region and in extra-splanchnic organs [46].

This review discusses the physiology of splanchnic blood flow, obtained largely from experimental studies, and the relatively limited available human data on splanchnic blood flow in patients at risk of multiple organ failure.

Splanchnic blood flow in normal conditions

The arterial inflow to the splanchnic region is via the coeliac trunk and the superior and inferior mesenteric arteries [17] (table 1). The venous efflux via the portal vein represents the sum of all splanchnic arterial inflow, except the hepatic arterial flow. The venous efflux via the hepatic veins (i.e. the blood flow through the liver) represents the total hepato-splanchnic bloodflow; in principle, the hepaticarterial flow could be estimated as the difference between portal venous flow and total hepatic venous efflux.

Hepatic arterial and portal venous blood flow interact closely. Owing to this "hydrodynamic" interaction, an alteration of flow to one of the circuits leads to an opposite change in the other circuit. The interaction tends to maintain total liver blood flow constant [57].

The blood flow of the small intestinal villus deserves special consideration. The artery and vein of the villus run in parallel but their blood flows are

(*Br. J. Anaesth.* 1996; 77: 50–58)

Key words

Blood, flow. Arteries. Oxygen, uptake. Gastrointestinal tract, blood flow.

JUKKA TAKALA, MD, PHD, Critical Care Research Program, Department of Intensive Care, Kuopio University Hospital, PO Box 1777, FIN-70211, Kuopio, Finland.

Table 1 Arterial blood supply to the splanchnic region (general overview, anatomical variation is common)

Main artery	Main tributary arteries	Main areas supplied
Coeliac trunk	Common hepatic (branches: right gastric and gastroduodenal)	Liver; parts of stomach, duodenum and pancreas
	Splenic	Spleen; parts of stomach and pancreas
	Left gastric	Parts of stomach and lower oesophagus
Superior mesenteric artery	Inferior pancreaticoduodenal, intestinal (12–15 branches), ileocolic, right colic, middle colic	Small intestine, caecum, ascending colon, most of transverse colon; parts of duodenum and pancreas
Inferior mesenteric artery	Left colic, sigmoid, superior rectal	Descending and sigmoid colon; parts of transverse colon and rectum

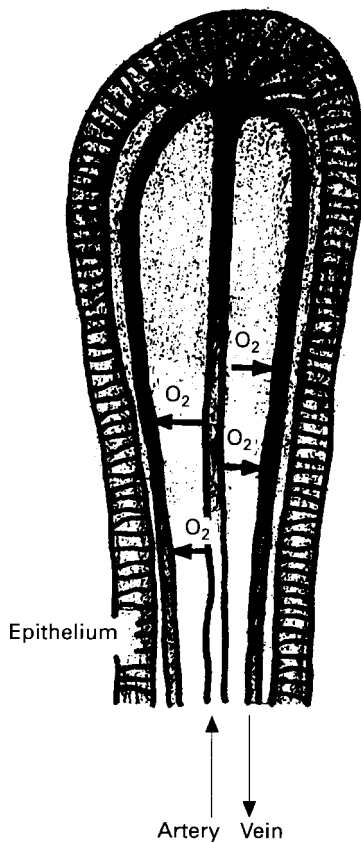


Figure 1 Schematic presentation of the intestinal villus countercurrent exchange of oxygen. Oxygen diffuses from the artery to the villous veins throughout their course to the tip of the villus. This results in a descending gradient of PO_2 from the base of the villus to the tip.

in opposite directions (fig. 1). The artery forms a dense capillary network close to the top of the villus. This anatomical arrangement allows countercurrent exchange of oxygen from the artery to the vein along their course within the villus [42]. This results in a descending gradient of tissue PO_2 from the base of the villus to its tip. This gradient is inversely related to the blood flow. An alternative explanation for the tissue PO_2 gradient in the villus may be a higher metabolic activity of the absorptive cells at the tip [42]. Regardless of the mechanism, the lower PO_2 at the tip may make the villus susceptible to tissue hypoxia, if vasoconstriction occurs for any reason.

Table 2 Splanchnic and whole body blood flow and oxygen uptake at rest [6, 24, 57, 77]

	Splanchnic	Whole body	Splanchnic contribution to total (%)
Blood flow (litre $\text{min}^{-1} \text{m}^{-2}$)	0.50–0.80	2.5–4.0	20–30
Oxygen consumption ($\text{ml} \text{min}^{-1} \text{m}^{-2}$)	20–40	110–150	20–35
Oxygen extraction fraction	0.22–0.35	0.22–0.30	

MEASUREMENT OF SPLANCHNIC BLOOD FLOW

Human studies on splanchnic blood flow are relatively scarce owing to methodological difficulties of quantitative measurements. Direct measurement of splanchnic blood flow is practically impossible without surgery for anatomical reasons (table 1; multivessel influx and efflux, mixing of portal venous and hepatic arterial blood within the liver). The same is true for intravascular pressures within the splanchnic bed. Accordingly, much of the basic splanchnic circulatory physiology has been extrapolated from experimental studies and has not been confirmed in normal humans.

Total hepatosplanchnic blood flow can be estimated according to the Fick principle from the hepatic uptake of substances that are exclusive metabolized by the liver and distributed in the plasma [9, 36, 71]. Hepatic venous catheterization is necessary for the measurement. A detailed description of this technique and its evaluation both in normal subjects and in intensive care patients has been published [71].

SPLANCHNIC BLOOD FLOW AND OXYGEN UPTAKE

The splanchnic blood flow should be considered in relation to the splanchnic metabolic activity and the oxygen extraction capabilities of the splanchnic tissues. Normally, the total hepatosplanchnic blood flow is approximately 20–30 % of cardiac output. Roughly 80 % of the total hepatic blood flow reaches the liver via the portal vein and 20 % via the hepatic artery (a tributary of the coeliac trunk). The splanchnic oxygen consumption at rest is approximately 20–35 % of whole body oxygen consumption.

This results in a slightly increased oxygen extraction fraction, compared with the systemic oxygen extraction at rest [6, 24, 57, 77] (table 2).

When the metabolic demands of the splanchnic region increase, for example, as the result of feeding, blood flow to the relevant organs increases in proportion to the increase in regional oxygen consumption. Accordingly, the splanchnic oxygen extraction ratio is well maintained. If the oxygen extraction is very low, increased extraction may precede increases in blood flow. The appropriate increase in splanchnic perfusion can be obtained by either increased cardiac output or its redistribution, or by the combination of the two mechanisms [5, 23, 57, 67].

Probably because of its important role in the regulation of blood volume and redistribution of blood flow, the splanchnic region has a large capacity to adapt to reduced blood flow by increasing the oxygen extraction. During exercise, blood flow is redistributed from the splanchnic region to the working muscle [58, 59]. Splanchnic oxygen extraction increases consequently. At least in the short term, the normal metabolic processes are maintained at high levels of oxygen extraction. In extreme conditions, when hypoxia due to reduced inspired oxygen fraction is superimposed on exercise, splanchnic oxygen extraction may increase to close to 90%. During this acute experiment, hepatic extraction of indocyanine green decreased, suggesting that the liver function was deteriorating [58].

The available data in humans suggest that the liver is well protected against hypoxia in normal subjects, at least when the exposure is short. On the other hand, the gut may be more susceptible to develop local or regional hypoxia. Experimental studies suggest that the gut may become hypoxic already, when its oxygen extraction approaches 70% [50, 78].

CONTROL OF SPLANCHNIC BLOOD FLOW

Gut blood flow

Gut blood flow is regulated by intrinsic and extrinsic mechanisms. The intrinsic factors include local metabolic control and myogenic control, local reflexes and locally produced vasoactive substances. The extrinsic factors include sympathetic innervation, circulating vasoactive substances and systemic haemodynamic changes [23]. The total blood flow to the gut wall is unevenly distributed in the four main layers—the mucosa, the submucosa, the muscularis and the serosa. The mucosa and the submucosa receive most of the flow, up to 90%. Changes in the total gut blood flow may influence the flow to the different layers to varying extent.

The local metabolic control responds by local vasodilatation, if blood flow is insufficient for the local metabolic needs [23, 25]. The actual signal for the vasodilatation is not known. Both tissue P_{O_2} and products of cell metabolism have been proposed. The myogenic control responds to an increase in vascular transmural pressure by arteriolar vasoconstriction [23, 35]. These two control mechanisms interact to maintain blood flow adequate for metabolic needs, and to minimize changes in the intestinal

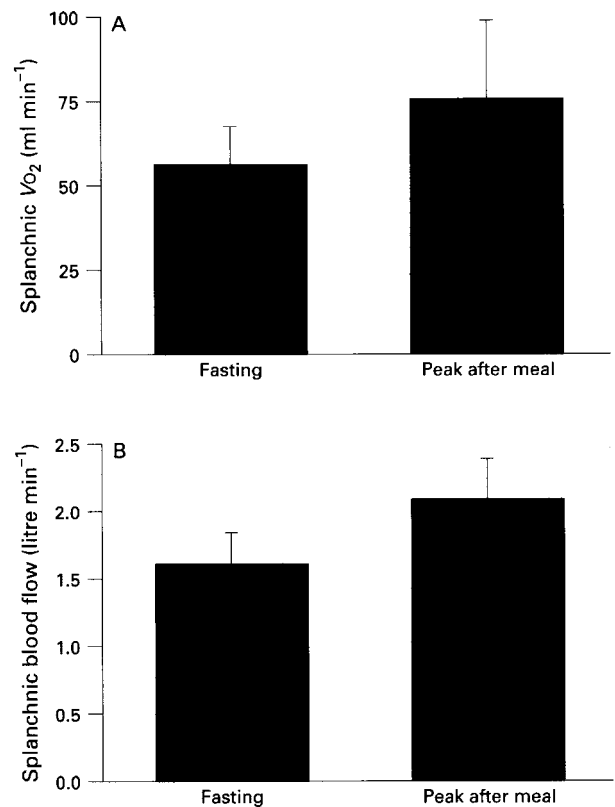


Figure 2 Effect of feeding on splanchnic blood flow and oxygen consumption in healthy subjects [data adapted from ref. 34]. A: Peak splanchnic oxygen consumption following a standard meal (mean (SD)). B: Peak splanchnic blood flow following a standard meal (mean (SD)).

capillary pressure and transcapillary fluid flux. Nitric oxide participates the vasoregulation of the hepato-splanchnic bed; its role is discussed separately later.

Intestinal blood pressure–flow autoregulation is much weaker than the autoregulation of, for example, renal blood flow [23]. When arterial pressure decreases, blood flow decreases despite a vasodilatory response. The autoregulation is enhanced by feeding: the blood flow is better maintained in response to a decrease in perfusion pressure in the fed state (i.e. with intraluminal food present) than in the starved condition.

The response of the intestinal vasculature to an increase in venous outflow pressure depends on the adequacy of perfusion [23, 68]. If perfusion is sufficient for metabolic needs, an increase in the venous pressure results in arteriolar vasoconstriction (myogenic control). If perfusion is poor and venous pressure increases, the vascular resistance decreases and the capillary density increases (metabolic control).

The gut blood flow has a distinct response to feeding [23]. Digestion results in pronounced post-prandial hyperaemia (fig. 2). Several mechanisms are probably involved: a local reflex to the presence of luminal contents, the release of vasoactive gastrointestinal hormones (e.g. gastrin, secretin, cholecystokinin) and the increase in gut metabolism (metabolic control) [23, 34].

The extrinsic neural control of gut blood flow is limited primarily to the sympathetic nervous system.

Sympathetic nervous activity reduces gut blood flow by increasing the vascular resistance of the arteries and arterioles; the veins have more limited sympathetic innervation. During persisting stimulation, the blood flow starts to recover after initial reduction ("autoregulatory escape") [23, 65]. After the stimulation, blood flow increases transiently to a higher level than before the stimulation [23].

Catecholamines are the most important circulating endogenous vasoactive substances that influence the gut blood flow. Alpha-adrenoceptor stimulation results in vasoconstriction and beta-adrenoceptor stimulation in vasodilatation. Accordingly, noradrenaline with predominantly alpha-adrenoceptor activity can be expected to increase the intestinal vascular resistance, whereas the effects of adrenaline are dose-dependent: vasodilatation at low doses and vasoconstriction at increasing doses when alpha-stimulation predominates. The net effects of circulating catecholamines on gut blood flow depend on the concomitant effects on cardiac output [3, 23]. Vasopressin and angiotensin are both potent intestinal vasoconstrictors. Their physiological role in the control of gut blood flow is not certain. They may both be involved in the intestinal vasoconstriction in acute hypovolaemia, and also modulate the response to sympathetic nerve stimulation and noradrenaline [16, 23].

Hepatic blood flow

There are three principal determinants of hepatic blood flow. The vascular resistance across the intestine determines the mesenteric influx and thereby the portal venous flow. The hepatic arterial resistance determines the hepatic arterial flow. The intrahepatic portal venous resistance is less important, since the portal venous flow is mainly determined by the outflow from the intestine, that is the resistance across the intestine. Finally, the hydrodynamic interaction between the hepatic arterial and portal venous flow, as described before, tends to compensate for any change in one of the inflows to the liver by a reciprocal change in the other [6, 57]. The hydrodynamic interaction, also called the hepatic arterial buffer response, is regulated by adenosine [39].

Autoregulation has little importance in the regulation of hepatic arterial pressure-volume relationship; the relationship between the arterial pressure and the flow is approximately linear. The hepatic portal venous bed clearly lacks autoregulation and has a linear pressure-flow relationship [6, 57].

Sympathetic nervous activity is the principal neural mechanism that influences hepatic blood flow. Sympathetic nerve stimulation evokes an increase in the hepatic arterial and portal resistance. The arterial vasoconstriction is transient and has similar autoregulatory escape as the intestinal vasoconstriction. In contrast, the portal response has a slower onset, but the increase in resistance is sustained, once established [26, 57]. In addition to the changes in vascular resistances, sympathetic nerve stimulation also reduces the hepatic volume, probably via contraction of the hepatic capacitance vessels. The

volume reduction has a slow onset, persists throughout the stimulation and recovers more slowly than it develops [7, 57].

Role of nitric oxide in splanchnic blood flow regulation

Recent experimental studies have demonstrated that nitric oxide is important in the maintenance of basal vasodilatation in the mesenteric vasculature and the hepatic artery [2, 44]. In an anaesthetized pig model, inhibition of nitric oxide synthesis (non-selective inhibition of both constitutive and inducible nitric oxide synthase) increased hepatic arterial resistance but had no effect on the portal vascular resistance, while the hepatic arterial autoregulation was enhanced. The hydrodynamic interaction between the hepatic arterial and portal vein blood flow (hepatic arterial buffer response) was present after nitric oxide inhibition. After administration of endotoxin, both the hepatic arterial buffer response and autoregulation were abolished, independent of nitric oxide. Inhibition of nitric oxide synthesis after endotoxin increased the resistance of both hepatic artery and portal vein [2]. This suggests that during experimental endotoxin shock, nitric oxide is important in preserving the blood flow across the splanchnic bed. While these observations cannot be directly extrapolated to human septic shock, they do suggest that non-selective nitric oxide inhibition in septic shock may improve blood pressure at the expense of splanchnic perfusion.

Splanchnic blood flow in patients at risk of multiple organ failure

Only very few studies with quantitative measurements of splanchnic blood flow in intensive care patients have been published [1, 10, 11, 22, 28, 29, 52–54, 62, 63, 69, 71–73, 76]. The results have clearly demonstrated that data obtained from experimental studies or more stable patients should be extrapolated to the intensive care patient with great caution. The determinants, clinical relevance and the time course of splanchnic blood flow abnormalities in patients at risk of multiple organ failure have not been well established.

All quantitative splanchnic blood flow studies in intensive care patients at risk of multiple organ failure deal with the total hepatosplanchnic blood flow as measured by the Fick principle [1, 10, 11, 22, 28, 29, 52–54, 62, 63, 69, 71–73, 76]. Gastrointestinal tonometry cannot be used as a surrogate measure of hepatosplanchnic blood flow, since there is no consistent relationship between splanchnic blood flow and measurements obtained by gastric tonometry [53, 54, 72, 73]. Hence, pH_i will be only discussed briefly in the context of response to therapy aimed at improving splanchnic perfusion.

The pathophysiology of splanchnic blood flow and inadequate splanchnic tissue perfusion in intensive care patients is multifactorial. Two substantially different patterns of changes in splanchnic blood flow and metabolic demand are common in intensive care patients: one observed in low flow states [38, 53,

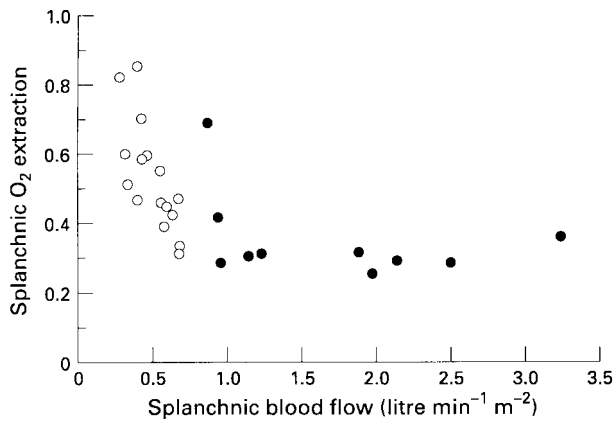


Figure 3 Splanchnic blood flow and oxygen extraction after cardiac surgery and in patients with septic shock and vasopressor therapy [data adapted from refs 62 and 63]. (○) After cardiac surgery; (●) septic shock + vasopressors.

54, 63, 64, 72, 73] and another in severe inflammatory conditions, infections and septic shock [1, 10, 11, 22, 28, 29, 62, 69, 76].

SPLANCHNIC BLOOD FLOW IN LOW FLOW STATES

In low flow states (e.g. cardiogenic shock) and hypovolaemia (without major injury or sepsis), splanchnic blood flow decreases without major changes in splanchnic metabolic demand [53, 54, 63, 72, 73]. In these conditions, perfusion of the heart and the central nervous system is maintained at the expense of the peripheral tissues and the splanchnic region. Once splanchnic vasoconstriction develops in response to hypovolaemia, the recovery of the blood flow will be prolonged: the increased splanchnic vascular resistance and reduced blood flow persists after the circulating blood volume has been restored and systemic haemodynamics have been stabilized [16]. This may increase the risk of inadequate splanchnic perfusion both after resuscitation of hypovolaemia and in intensive care patients susceptible to acute blood volume changes (e.g. as a result of capillary leak) [70].

In low flow states, vasoregulation is usually well preserved and an increased oxygen extraction compensates for the reduction of blood flow (fig. 3). Fully developed physiological compensation may preserve adequate splanchnic tissue oxygenation even during markedly reduced hepatosplanchnic blood flow. The limits of compensation and the time of tolerance for splanchnic hypoperfusion have not been well defined. Perioperative hepatic vein oxygen saturation below 30% during liver resection was associated with postoperative liver dysfunction [37], whereas brief exposure to lower hepatic venous saturation (or increased splanchnic oxygen extraction) have been reported during and after cardiac surgery without any major consequences [38, 53, 63, 64]. The splanchnic blood is defended at the expense of peripheral blood flow in low cardiac output syndrome after cardiac surgery [53, 63].

Nevertheless, prolonged hypovolaemia or low cardiac output will inevitably lead to splanchnic tissue hypoxia and increase the risk of multiple organ

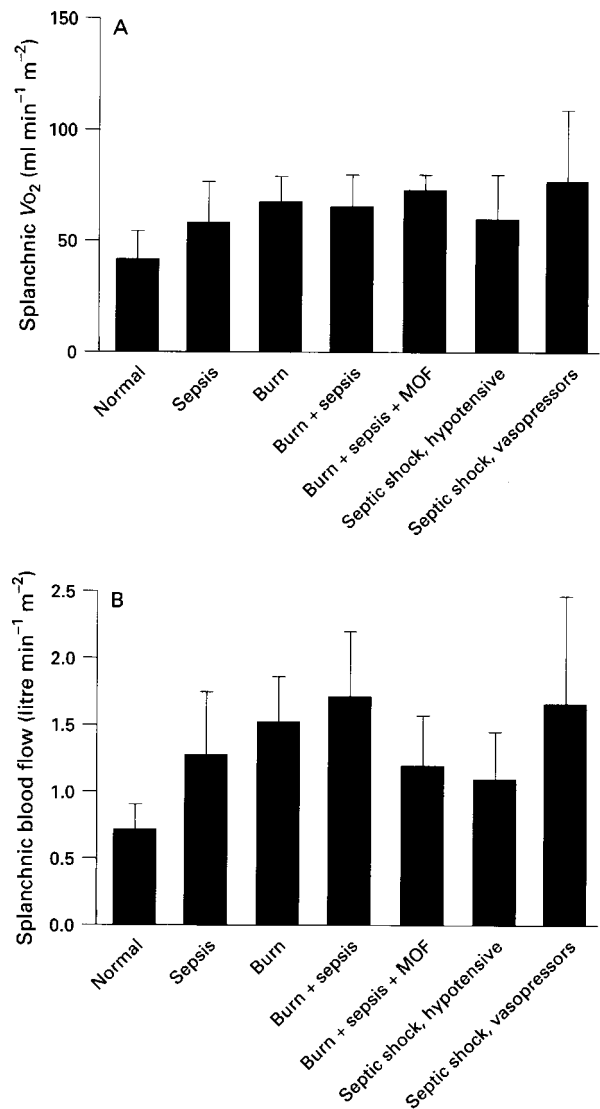


Figure 4 Increased splanchnic oxygen demand and blood flow in sepsis. A: Splanchnic hypermetabolism tends to increase with increasing severity of sepsis [data adapted from refs 11, 62 and 76]. B: Splanchnic blood flow and the severity of sepsis [data adapted from refs 11, 62 and 76].

failure. It is reasonable to assume that a slowly developing low splanchnic blood flow is better tolerated than an acute reduction.

SPLANCHNIC BLOOD FLOW IN INFLAMMATION AND INFECTION

In severe inflammation (e.g. systemic inflammatory response syndrome or SIRS, septic infections, septic shock), the metabolic demand for oxygen in the splanchnic region is increased [1, 10, 11, 22, 28, 29, 62, 69, 76]. In patients with normal or hyperdynamic haemodynamics, the total splanchnic blood flow is also higher than normal, but the increase in oxygen consumption is disproportionate to the increase in blood flow, and necessitates high oxygen extraction (figs 3 and 4). This appears to be the case regardless of whether stable haemodynamics have been obtained by fluids alone or with the aid of vasoactive

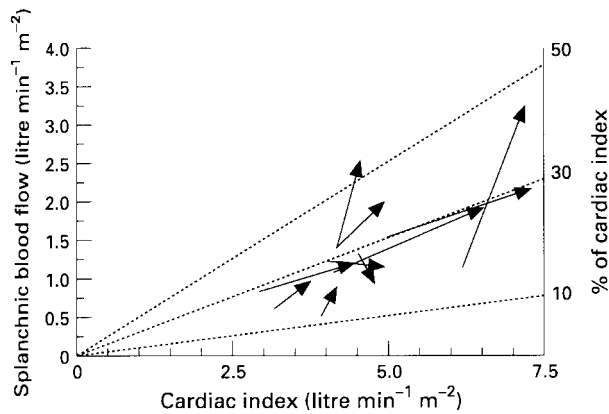


Figure 5 Changes in splanchnic blood flow in septic shock in response to treatment of hypotension with vasopressors [data adapted from ref. 62]. Wide interindividual variability is characteristic of the response.

drugs [1, 10, 11, 22, 28, 29, 62, 69, 76]. In hyperdynamic septic shock during hypotension, splanchnic blood flow and splanchnic oxygen consumption are higher than normal and the splanchnic oxygen extraction is high [62]. Correction of hypotension by vasopressor drugs tends to increase the splanchnic blood flow further in hyperdynamic septic shock, although individual responses may vary (fig. 5) [62].

Endothelial injury is common in sepsis and contributes to abnormal vascular tone, blood flow maldistribution and development of hypovolaemia [8, 14, 46]. In addition, severe sepsis is almost invariably accompanied by acute respiratory failure, which limits the systemic oxygen delivery. Myocardial depression is also common in sepsis and many limit the response of systemic blood flow to the increased oxygen demand [51]. Under these circumstances, the splanchnic hypermetabolism increases the risk of splanchnic oxygen delivery/demand mismatch, and even subtle changes in blood volume, cardiac output, arterial oxygenation or oxygen demand in other tissues may lead to an imbalance between splanchnic oxygen delivery and demand.

THERAPEUTIC INTERVENTIONS AND SPLANCHNIC BLOOD FLOW

Volume resuscitation

The blood volume can be expected to have a major impact on splanchnic blood flow [13, 16, 55]. Indeed, reduction of splanchnic blood flow has been demonstrated in normal subjects after controlled small-volume haemorrhage [12, 56], and after simulated hypovolaemia following the application of lower body negative pressure [16]. Restoration of blood volume after simulated hypovolaemia was associated with a protracted reduction of splanchnic blood flow. Effects of blood volume on splanchnic blood flow in intensive care patients have not been published. Indirect data from studies using volume resuscitation to improve gastric pH_i suggests that restoration of blood volume is of primary importance in assuring adequate splanchnic perfusion in intensive care patients [32, 47–49].

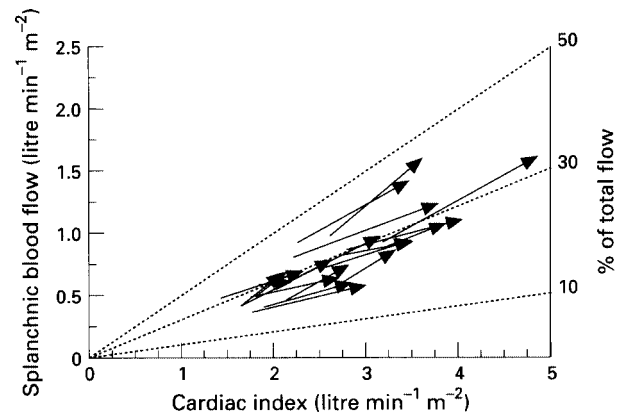


Figure 6 Changes in splanchnic blood flow in response to dobutamine after cardiac surgery [data adapted from ref. 53]. Splanchnic blood flow changes parallel the changes in cardiac output.

Adrenergic agents

Vasoactive drugs, especially sympathomimetic amines are used frequently to support tissue perfusion in circulatory failure. The effects of sympathomimetic drugs on splanchnic blood flow in intensive care patients can not be predicted from their pharmacological characteristics alone or extrapolated from experimental models. Traditionally, the potential effects of adrenergic agents on regional perfusion have been interpreted in terms of their relative adrenergic receptor activity. In critically ill patients, the effects may be modified, for example as the result of receptor downregulation. In experimental studies, alpha-adrenergic stimulation by dopamine, noradrenaline and adrenaline increase renal and visceral vascular resistance and reduce renal and visceral blood flow [61]. The effects of dobutamine depend on the balance between its alpha-mediated vasoconstriction and beta-mediated vasodilation [74]. Dopexamine with beta₂- and dopaminergic properties and without alpha-stimulation may have beneficial effects on splanchnic blood flow [41].

In 10 patients with septic shock, correction of hypotension by administration of vasopressor doses of dopamine increased splanchnic blood flow, whereas the effects of noradrenaline were more variable [62]. On the other hand, dopamine worsened gastric mucosal acidosis in septic shock, while noradrenaline resulted increased gastric mucosal pH_i despite identical effects on systemic haemodynamics [43].

In patients with chronic congestive heart failure, dopexamine increased the splanchnic blood flow whereas neither dopamine nor dobutamine had an effect [40]. In contrast, both dobutamine and dopexamine consistently increased splanchnic blood flow immediately after cardiac surgery (figs 6 and 7) [53, 63, 72]. Despite the major increases in total splanchnic blood flow, both dobutamine and dopexamine lowered the gastric pH_i or failed to correct the gastric mucosal acidosis [53, 72]. These effects were even more prominent in patients with low cardiac output [53]. On the other hand, dobutamine corrected gastric mucosal acidosis in patients with

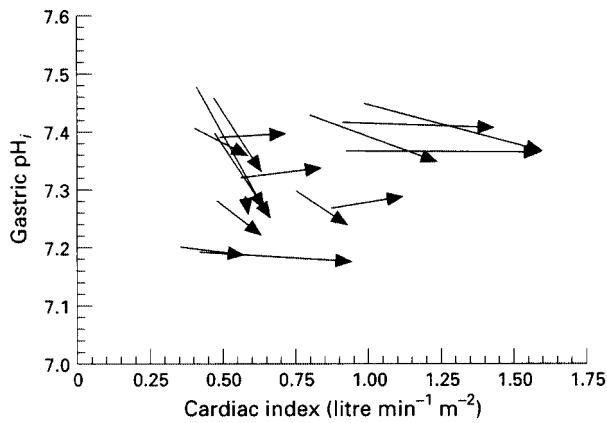


Figure 7 Changes in splanchnic blood flow and gastric pH_i in response to dobutamine after cardiac surgery [data adapted from ref. 53]. Gastric mucosal acidosis worsens especially in patients with low cardiac output despite the increased splanchnic blood flow.

sepsis [31]. Evidently, the underlying disease can modify the splanchnic blood flow responses to vasoactive drugs.

The cause for the decrease in gastric pH_i despite increased blood flow is not clear. The effects of a vasoactive drug may not be uniform throughout the splanchnic region: vasopressor therapy with dopamine or noradrenaline in experimental endotoxin shock increases regional vascular resistance of the colon, while the perfusion in the other parts of splanchnic region is well maintained [4]. The effects of vasoactive drugs on microcirculation may differ despite similar effects on blood flow distribution in major vessels [21]. Observations in experimental peritonitis support this concept: treatment with dobutamine produced more hepatocellular damage compared with dopexamine [75]. The catecholamines may also markedly modify the activity of various metabolic pathways in the liver [3] and simultaneously alter the splanchnic blood flow and its distribution. Accordingly, catecholamines may induce regional perfusion abnormalities and alter the balance between regional oxygen delivery and tissue metabolic demands.

Non-adrenergic vasodilators

The effects of vasodilators on splanchnic blood flow are controversial. Experimental studies suggest that vasodilators (adenosine and isoprenaline) may induce a vascular steal phenomenon within the intestinal circulation by redistributing the blood flow despite an overall increase [66].

In patients with chronic congestive heart failure, nitrates and sodium nitroprusside had no effect on the hepatosplanchnic blood flow despite increased cardiac output, indicating blood flow redistribution [40]. In contrast, sodium nitroprusside increased hepatosplanchnic blood flow in parallel with cardiac output in postoperative cardiac surgery patients [54]. Despite the increase in splanchnic blood flow, gastric pH_i decreased slightly.

Angiotensin converting enzyme inhibitors either had no effect or slightly reduced the hepato-

splanchnic flow in cardiac failure [40]. After cardiac surgery, enalapril had no effect on either cardiac output or hepatosplanchnic blood flow, but reduced the gastric pH_i [52].

The effect of vasodilators on hepatosplanchnic blood flow or gastric pH_i have not been studied in septic patients. Nevertheless, the available data suggest that also the effects of vasodilators are modified markedly by the underlying clinical condition. It seems likely that redistribution of blood flow may occur at the level of both macro- and microcirculation.

References

1. Aulick LH, Goodwin jr CW, Becker RA, Wilmore DW. Visceral blood flow following thermal injury. *Annals of Surgery* 1981; **193**: 112–116.
2. Ayuse T, Brienza J, Revelly P, Boitnott JK, Robotham JL. Role of nitric oxide in porcine liver circulation under normal and endotoxemic conditions. *Journal of Applied Physiology* 1995; **78**: 1319–1329.
3. Bearn AG, Billing B, Sherlock S. The effect of adrenaline and noradrenaline on hepatic blood flow and splanchnic carbohydrate metabolism in man. *Journal of Physiology* 1951; **115**: 430–441.
4. Breslow MJ, Miller CF, Parker SD, Walman AT, Traystman RJ. Effect of vasopressors on organ blood flow during endotoxin shock in pigs. *American Journal of Physiology* 1987; **H291**–H300.
5. Brundin T, Wahren J. Influence of a mixed meal on splanchnic and interscapular energy expenditure in humans. *American Journal of Physiology* 1991; **260**: E232–E237.
6. Bruns FJ, Fraley DS, Haigh J, Marquez JM, Martin DJ, Matuschak GM, Snyder JV. Control of organ blood flow. In: Snyder JV, Pinsky MR, eds. *Oxygen Transport in the Critically Ill*. Chicago: Year Book Medical Publishers, Inc, 1987: 87–124.
7. Carneiro JJ, Donald DE. Change in liver blood flow and blood content in dogs during direct and reflex alteration of hepatic sympathetic nerve activity. *Circulation Research* 1977; **40**: 150–158.
8. Carrico CJ, Meakins JL, Marshall JC, Fry D, Maier RV. Multiple organ failure syndrome. *Archives of Surgery* 1986; **121**: 196–208.
9. Clements D, West R, Elias E. Comparison of bolus and infusion methods for estimating hepatic blood flow in patients with liver disease using indocyanine green. *Journal of Hepatology* 1987; **5**: 282–287.
10. Dahn MS, Lange P, Lobdell K, Hans B, Jacobs LA, Mitchell RA. Splanchnic and total body oxygen consumption differences in septic and injured patients. *Surgery* 1987; **101**: 69–80.
11. Dahn MS, Lange P, Wilson RF, Jacobs LA, Mitchell RA. Hepatic blood flow and splanchnic oxygen consumption measurements in clinical sepsis. *Surgery* 1990; **107**: 295–301.
12. Dalton JM, Gore DC, Makhoul RG, Fisher MR, DeMaria EJ. Decreased splanchnic perfusion measured by duplex ultrasound in humans undergoing small volume hemorrhage. *Critical Care Medicine* 1995; **23**: 491–497.
13. Darle N, Lim RC jr. Hepatic arterial and portal venous flows during hemorrhage. *European Surgical Research* 1975; **7**: 259–268.
14. Deitch EA. Multiple organ failure. Pathophysiology and potential future therapy. *Annals of Surgery* 1992; **216**: 117–134.
15. Doglio GR, Pusajo JF, Egurrola MA, Bonfigli GC, Parra C, Vetere L, Hernandez MS, Fernandez S, Palizas F, Gutierrez G. Gastric mucosal pH as a prognostic index of mortality in critically ill patients. *Critical Care Medicine* 1991; **19**: 1037–1040.
16. Edouard AR, Degrémont A-C, Duranteau J, Pussard E, Berdeaux A, Samii K. Heterogenous regional vascular responses to simulated transient hypovolemia in man. *Intensive Care Medicine* 1994; **20**: 414–420.
17. Ellis H. The gastrointestinal tract, the stomach. In: *Clinical*

- Anatomy: a Revision and Applied Anatomy for Clinical Students*. 6th ed. Oxford: Blackwell Scientific Publications, 1976: 73–98.
18. Fiddian Green RG, Amelin PM, Herrmann JB, Arous E, Cutler BS, Schiedler M, Wheeler HB, Baker S. Prediction of the development of sigmoid ischemia on the day of aortic operations. Indirect measurements of intramural pH in the colon. *Archives of Surgery* 1986; **121**: 654–660.
 19. Fiddian-Green RG, Baker S. Predictive value of the stomach wall pH for complications after cardiac operations: comparison with other monitoring. *Critical Care Medicine* 1987; **15**: 153–156.
 20. Fink MP, Kaups KL, Wang H, Rothschild HR. Maintenance of superior mesenteric arterial perfusion prevents increased intestinal permeability in endotoxic pigs. *Surgery* 1991; **110**: 154–161.
 21. Giraud GD, MacCannell KL. Decreased nutrient blood flow during dopamine- and epinephrine-induced intestinal vasodilation. *Journal of Pharmacology and Experimental Therapeutics* 1984; **230**: 214–220.
 22. Gottlieb ME, Sarfeh IJ, Stratton H, Goldman ML, Newell JC, Shah DM. Hepatic perfusion and splanchnic oxygen consumption in patients postinjury. *Journal of Trauma* 1983; **23**: 836–843.
 23. Granger DN, Richardson PDI, Kvietys PR, Mortillaro NA. Intestinal blood flow. *Gastroenterology* 1980; **78**: 837–863.
 24. Granger HJ, Norris CP. Intrinsic regulation of intestinal oxygenation in the anesthetized dog. *American Journal of Physiology* 1980; **238**(7): H836–H843.
 25. Granger HJ, Shepherd AP. Dynamics and control of the microcirculation. *Advances in Biomedical Engineering* 1979; **7**: 1–61.
 26. Greenway CV, Oshiro G. Comparison of the effects of hepatic nerve stimulation on arterial flow, distribution of arterial and portal flows and the blood content in the livers of anaesthetized cats and dogs. *Journal of Physiology (London)* 1972; **227**: 487–501.
 27. Grum CM, Fiddian-Green RG, Pittenger GL, Grant BJB, Rothman ED, Dantzer DR. Adequacy of tissue oxygenation in intact dog intestine. *Journal of Applied Physiology* 1984; **56**: 1065–1069.
 28. Gump FE, Price JB jr, Kinney JM. Blood flow and oxygen consumption in patients with severe burns. *Surgery, Gynecology and Obstetrics* 1970; **130**: 23–28.
 29. Gump FE, Price JB jr, Kinney JM. Whole body and splanchnic blood flow and oxygen consumption measurements in patients with intraperitoneal infection. *Annals of Surgery* 1970; **171**: 321–328.
 30. Gutierrez G, Bismar H, Dantzer DR, Silva N. Comparison of gastric intramucosal pH with measures of oxygen transport and consumption in critically ill patients. *Critical Care Medicine* 1992; **20**: 451–457.
 31. Gutierrez G, Clark C, Brown SD, Price K, Ortiz L, Nelson C. Effect of dobutamine on oxygen consumption and gastric mucosal pH in septic patients. *American Journal of Respiratory and Critical Care Medicine* 1994; **150**: 324–9.
 32. Gutierrez G, Palizas F, Doglio G, Wainsztein N, Galesio A, Pacin J, Dubin A, Schiavi E, Jorge M, Pusajo J, Klein F, San Roman E, Dorfman B, Shottlender J, Giniger R. Gastric intramucosal pH as a therapeutic index of tissue oxygenation in critically ill patients. *Lancet* 1992; **339**: 195–199.
 33. Haglund U, Hulten L, Åhren C, Lundgren O. Mucosal lesions in the human small intestine in shock. *Gut* 1975; **16**: 979–984.
 34. Jensen MD, Johnson CM, Cryer PE, Murray MJ. Thermogenesis after a mixed meal: role of leg and splanchnic tissues in men and women. *American Journal of Physiology* 1995; **268**: E433–438.
 35. Johnson PC. Myogenic nature of increase in intestinal vascular resistance with venous pressure elevation. *Circulation Research* 1959; **6**: 992–999.
 36. Jorfeldt L, Juhlin-Dannfelt A. The influence of ethanol on splanchnic and skeletal muscle metabolism in man. *Metabolism* 1978; **27**: 97–106.
 37. Kainuma M, Nakashima K, Sakuma I, Kawase M, Komatsu T, Shimada Y, Nimura Y, Nonami T. Hepatic venous hemoglobin oxygen saturation predicts liver dysfunction after hepatectomy. *Anesthesiology* 1992; **76**: 379–386.
 38. Landow L, Phillips DA, Heard SO, Prevost D, Vandersalm TJ, Fink MP. Gastric tonometry and venous oximetry in cardiac surgery patients. *Critical Care Medicine* 1991; **19**: 1226–1233.
 39. Lauth WW. Mechanism and role of intrinsic regulation of hepatic arterial blood flow: hepatic arterial buffer response. *American Journal of Physiology* 1985; **249**: G549–G556.
 40. Leier CV. Regional blood flow responses to vasodilators and inotropes in congestive heart failure. *American Journal of Cardiology* 1988; **62**: 86E–93E.
 41. Lokhandwala MF, Jandhyala BS. Effects of dopaminergic agonists on organ blood flow and function. *Clinical Intensive Care* (suppl) 1992; **3**: 12–15.
 42. Lundgren O, Haglund U. The pathophysiology of the intestinal countercurrent exchanger. *Life Sciences* 1978; **23**: 1411–1422.
 43. Marik PE, Mohedin M. The contrasting effects of dopamine and norepinephrine on systemic and splanchnic oxygen utilization in hyperdynamic sepsis. *Journal of the American Medical Association* 1994; **272**: 1354–1357.
 44. Mathie RT, Ralevic V, Alexander B, Burnstock G. Nitric oxide is the mediator of ATP-induced dilatation of the rabbit hepatic arterial vascular bed. *British Journal of Pharmacology* 1991; **103**: 1602–1606.
 45. Matuschak GM. Liver-lung interactions in critical illness. *New Horizons* 1994; **2**: 488–504.
 46. Matuschak GM. Oxidative stress and oxygen-dependent cytokine production. In: Vincent J-L, ed. *Yearbook of Intensive Care Medicine*. Berlin: Springer-Verlag, 1995.
 47. Maynard N, Bihari D, Beale R, Smithies M, Baldock G, Mason R, McColl I. Assessment of splanchnic oxygenation by gastric tonometry in patients with acute circulatory failure. *Journal of the American Medical Association* 1993; **270**: 1203–1210.
 48. Mythen MG, Webb AR. Intra-operative gut mucosal hypoperfusion is associated with increased post-operative complications and cost. *Intensive Care Medicine* 1994; **20**: 99–104.
 49. Mythen MG, Webb AR. The role of gut mucosal hypoperfusion in the pathogenesis of post-operative organ dysfunction. *Intensive Care Medicine* 1994; **20**: 203–209.
 50. Nelson DP, Samsel RW, Wood LDH, Schumacker PT. Pathological supply dependence of systemic and intestinal O₂ uptake during endotoxemia. *Journal of Applied Physiology* 1988; **64**: 2410–2419.
 51. Parker MM, Shelheimer JH, Bacharach SL, Green MV, Natanson C, Fredrick TM, Damske RN, Parrillo JE. Profound but reversible myocardial depression in patients with septic shock. *Annals of Internal Medicine* 1984; **100**: 483–490.
 52. Parvainen I, Rantala A, Ruokonen E, Takala J. Failure of enalaprilat to reduce blood pressure in hypertensive cardiac surgery patients. *Critical Care Medicine* 1995; **23** (Suppl): A140.
 53. Parvainen I, Ruokonen E, Takala J. Dobutamine-induced dissociation between changes in splanchnic blood flow and gastric intramucosal pH after cardiac surgery. *British Journal of Anaesthesia* 1995; **74**: 277–282.
 54. Parvainen I, Ruokonen E, Takala J. Sodium nitroprusside after cardiac surgery: central and regional hemodynamics. *Acta Anaesthesiologica Scandinavica* (in press).
 55. Peitzman A. Principles of circulatory support and the treatment of hemorrhagic shock. In: Snyder JV, Pinsky MR, eds. *Oxygen Transport in the Critically Ill*. Chicago: Year Book Medical Publishers, Inc., 1987: 407–418.
 56. Price HL, Deutsch S, Marshall BE, Stephen GW, Behar MG, Neufeld GR. Hemodynamic and metabolic effects of hemorrhage in man with particular reference to the splanchnic circulation. *Circulation Research* 1966; **18**: 469–474.
 57. Richardson PDI, Withrington PG. Liver blood flow. Intrinsic and nervous control of liver blood flow. *Gastroenterology* 1981; **81**: 159–173.
 58. Rowell LB, Blackmon JR, Kenny MA, Escourrou P. Splanchnic vasomotor and metabolic adjustments to hypoxia and exercise in humans. *American Journal of Physiology* 1984; **247**: H251–H258.
 59. Rowell LB, Brengelmann GL, Blackmon JR, Twiss RD, Kusumi F. Splanchnic blood flow and metabolism in heat-stressed man. *Journal of Applied Physiology* 1968; **24**: 475–484.
 60. Rowell LB, Detry J-MR, Blackmon JR, Wyss C. Importance

- of the splanchnic vascular bed in human blood pressure regulation. *Journal of Applied Physiology* 1972; **32**: 213–220.
61. Ruffolo RR Jr, Fondacaro JD, Levitt B, Edwards RM, Kinter LB. Pharmacologic manipulation of regional blood flow. In: Snyder JV, Pinsky MR, eds. *Oxygen Transport in Critically Ill*. 1st ed. Chicago: Year Book Medical Publishers, 1987: 450–474.
 62. Ruokonen E, Takala J, Kari A, Saxén H, Mertsola J, Hansen EJ. Regional blood flow and oxygen transport in septic shock. *Critical Care Medicine* 1993; **21**: 1296–1303.
 63. Ruokonen E, Takala J, Kari A. Regional blood flow and oxygen transport in low cardiac output syndrome after cardiac surgery. *Critical Care Medicine* 1993; **21**: 1304–1311.
 64. Ruokonen E, Takala J, Uusaro A. Effect of vasoactive treatment on the relationship between mixed venous and regional oxygen saturation. *Critical Care Medicine* 1991; **19**: 1365–1369.
 65. Shepherd AP, Granger HJ. Autoregulatory escape in the gut: a systems analysis. *Gastroenterology* 1973; **65**: 77–91.
 66. Shepherd AP, Riedel GL, Maxwell LC, Kiel JW. Selective vasodilators redistribute intestinal blood flow and depress oxygen uptake. *American Journal of Physiology* 1984; **247**: G377–384.
 67. Shepherd AP. Intestinal blood flow autoregulation during foodstuff absorption. *American Journal of Physiology* 1980; **8**: H156–H162.
 68. Shepherd AP. Myogenic responses of intestinal resistance and exchange vessels. *American Journal of Physiology* 1977; **233**: H547–554.
 69. Steffes CP, Dahn MS, Lange MP. Oxygen transport-dependent splanchnic metabolism in the sepsis syndrome. *Archives of Surgery* 1994; **129**: 46–52.
 70. Takala J. Splanchnic perfusion in shock. *Intensive Care Medicine* 1994; **20**: 403–404.
 71. Uusaro A, Ruokonen E, Takala J. Estimation of splanchnic blood flow by the Fick principle in man and problems in the use of indocyanine green. *Cardiovascular Research* 1995; **30**: 106–112.
 72. Uusaro A, Ruokonen E, Takala J. Gastric mucosal pH does not reflect change in splanchnic blood flow after cardiac surgery. *British Journal of Anaesthesia* 1995; **74**: 149–154.
 73. Uusaro A, Ruokonen E, Takala J. Splanchnic oxygen transport after cardiac surgery: evidence for inadequate tissue perfusion after stabilization of hemodynamics. *Intensive Care Medicine* 1996; **22**: 26–33.
 74. Vernon DD, Garret JS, Banner W jr, Dean JM. Hemodynamic effects of dobutamine in an intact animal model. *Critical Care Medicine* 1992; **20**: 1322–1329.
 75. Webb AR, Moss RF, Tighe D, Al-Saady N, Bennett ED. The effects of dobutamine, dopexamine and fluid on hepatic histological responses to porcine faecal peritonitis. *Intensive Care Medicine* 1991; **17**: 487–493.
 76. Wilmore DW, Goodwin CW, Aulick LH, Powanda MC, Mason AD, Pruitt jr MD. Effect of injury and infection on visceral metabolism and circulation. *Annals of Surgery* 1980; **192**: 491–500.
 77. Winsö O, Biber B, Gustavsson B, Holm C, Milsom I, Niemand D. Portal blood flow in man during graded positive end-expiratory pressure ventilation. *Intensive Care Medicine* 1986; **12**: 80–85.
 78. Zhang H, Spapen H, Manikis P, Rogiers P, Metz G, Buurman WA, Vincent J-L. Tirilazad mesylate (U-74006F) inhibits effects of endotoxin in dogs. *American Journal of Physiology* 1995; **268**: H1847–H1855.